



Agility



I MT Mines Albi accelerated its transformation in 2020. Resilience and adaptability have become the motto of the school throughout this very unusual year.



A scenario adjusted in real time to ensure courses are maintained

In a clear testimony to its agility, IMT Mines Albi has shown great creativity and capacity for adaptation in applying the new health measures, ever since higher education institutions were closed.

The conditions for welcoming its students have been thought through and modified throughout the year to enable them to pursue their education.

IMT Mines Albi was able to welcome **1 011 students** at the beginning of the academic year using both a hybrid and comodal learning.



ISO 9001 certification: a symbol of agility

The school has succeeded in renewing its ISO 9001:2015 certification, a guarantee of continuous improvement, making change management a key strength and agility.



Growth in open-access publishing

Truly committed to the widest and most open dissemination possible, IMT Mines Albi encourages access to the output of its researchers. IMT Mines Albi is proud to present 84% of its 2019 publications in open access on the open science barometer.

EVENTS MAINTAINED AND ADAPTED



Online lectures and thesis defences

All the year's lectures and thesis defences were conducted on line, allowing a new audience in these important events of the school calendar.



European Researchers' Night (NEC)

The flagship event in the school's dissemination of scientific and technical culture, the NEC took place entirely on line for the first time. With more than 600 connections, the novel format of this edition received very positive audience reviews.



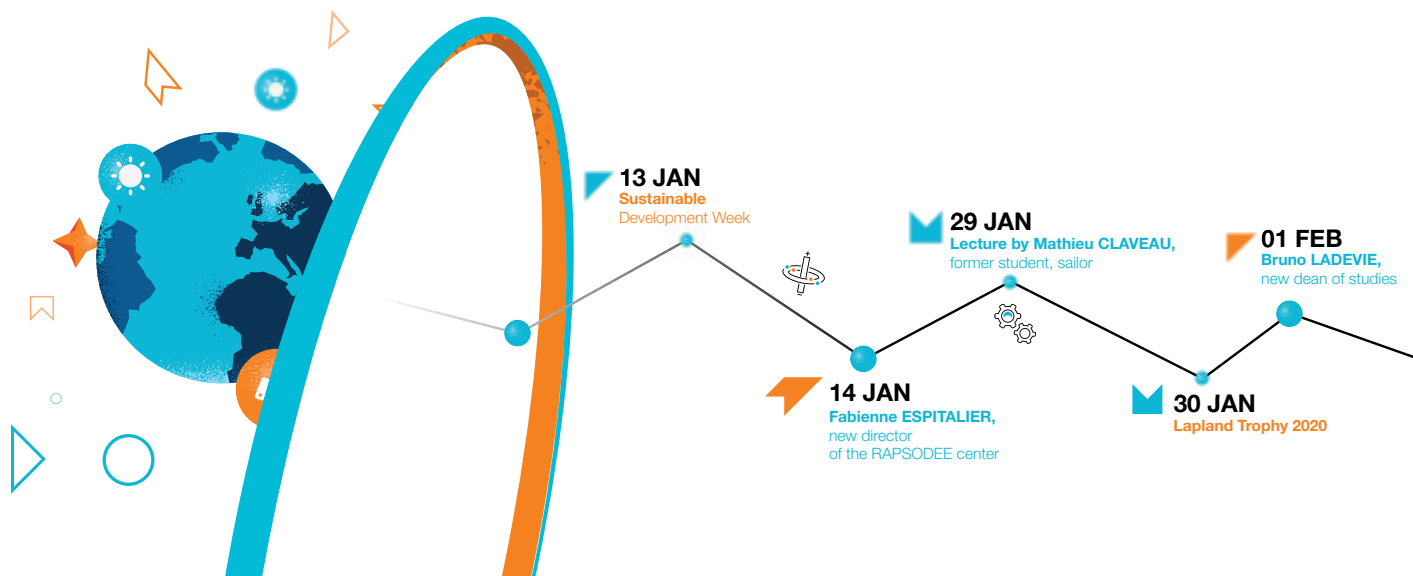
4th edition of the International Week

Key event for its international partners, the International Week of IMT Mines Albi took place on line. Participants were even treated to a virtual visit of the city of Albi.



A virtual reality General Assembly for alumni

Exceptionally, the Mines Albi Alumni GA was held in a virtual immersive environment proposed by one of the school's partner companies, Immersive Factory.



Continuity



I MT Mines Albi has placed great value on maintaining the quality of its 4 great missions:

- training engineers and doctors;
- leading research and innovation;
- contributing to local and national economic development;
- promoting scientific, technical and entrepreneurial culture.

New projects have taken shape, new conventions have been signed, the international positioning of the school has been confirmed...



Sustainable Development Week

Organised by the student movement UNITA, this 1st edition highlighted green solutions and alternatives for the campus and the city of Albi.



The technology incubator: enterprising and energetic

The incubator welcomed five promising new projects in 2020: HEMERA Solutions, Alert Smart City, LISA, Junglo and SKEP.



3 ERASMUS+ projects favouring international mobility

The school obtained three grants promoting international mobility. With the main focus on Asia, these mobility projects concern all the various actors of the school in the direction of Malaysia, Vietnam and Indonesia.



Publication of a reference book

Ange NZIHOU, professor at the RAPSODEE center, UMR CNRS 5302, published a new handbook on waste management and recycling in cooperation with 87 co-authors from 16 different countries.



A new director for the RAPSODEE center

Fabienne ESPITALIER was appointed director of the RAPSODEE, UMR CNRS 5302, training and research center for a period of 5 years.



Artificial intelligence at the heart of a new partnership

Bolloré Transport & Logistics, Next4 and the Industrial Engineering Center of IMT Mines Albi signed a Memorandum of Understanding (MoU) with the aim of developing artificial intelligence for the traceability of the flows of goods.



A new phase of cooperation at the ICA-A*

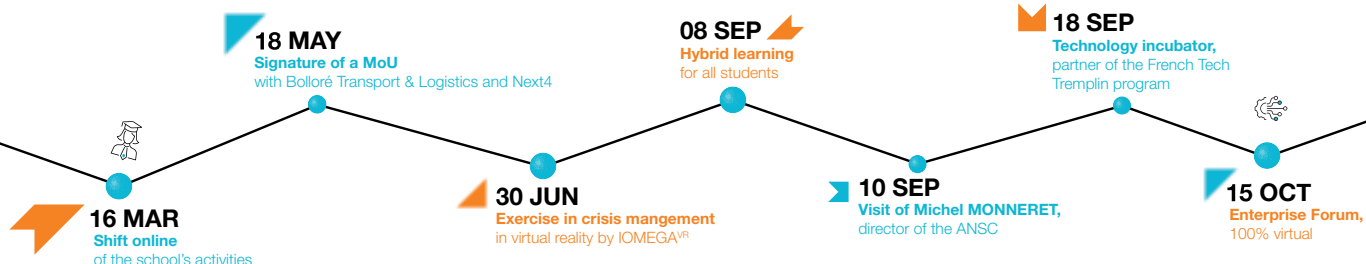
The French Institute of Textiles and Clothing and IMT Mines Albi renewed their partnership agreement, in the field of technical applications of composite materials in textiles.

* ICA-A: Clément Ader Institute, Albi site



A unique experiment in crisis management

On the occasion of the 1st anniversary of the EGCERSIS joint laboratory, the Industrial Engineering Center organised a live broadcast from its virtual reality platform IOMEGA^{VR}, a crisis management exercise simulating a fire at IMT Mines Albi.



Excellence



Every year, several teachers, researchers, students, graduates or incubated companies stand out for their excellence and shine a light on IMT Mines Albi. Here's a look back at the main awards, distinctions, prizes and participations of the year 2020.



A master's degree among one of the three most famous university rankings in the world

The SCALE MSc course, run by IMT Mines Albi in cooperation with the Toulouse Business School, features for the first time in 29th place in the QS World University rankings for the world's best master's courses.



Renewable hydrogen, a sector controlled by IMT Mines Albi

Ange NZIHOU, professor at the RAPSODEE center, UMR CNRS 5302, and Narendra JUSSIEN, director of the school, were heard by the Economic, Social and Environmental Council to provide answers to this major issue of energy transition.



European recognition of a young researcher at the ICA-A*

Damien TEXIER, researcher at the CNRS, was the winner of the prestigious European Starting Grant call for projects of the European Research Council program.



A start-up recognised for its innovation

HYCCO, the incubated company that boosts hydrogen batteries, won the Positive Energy Trophy at the Occitanie region's competition, Les Inn'Ovations.



Winners of a climate grant

The student association I2D (Engineers for Sustainable Development) won the call for citizens' projects launched by the Occitanie region entitled "My solution for the climate".



IMT Mines Albi, among the best engineering schools in France, according to the rankings of the "L'Étudiant" magazine

Since 2018, IMT Mines Albi has continued to move up the table of the best engineering schools in France in the "L'Étudiant" magazine rankings.

This year, IMT Mines Albi joined the schools in Group A for the first time in 37th place.

A key decision-aiding tool for all future students, this classification has allowed the school to demonstrate its strength in the three following categories:

- academic excellence;
- international outreach;
- close ties with business.



Participation in an inclusive polar rally

Three 100% female teams composed of students and permanent staff took on the sporting challenge of the Lapland Trophy, testifying to the school's commitment to promoting technical and scientific careers for young women.

16-20 NOV
International Week



27 NOV
European Researchers' Night
on line



Key figures



TRAINING

1011

students
in different courses including

806 in engineering training

148 in apprenticeship

112 masters (DNM, MSc) advanced Masters

87 PhD students

38% women

33% student grant recipients

20% foreign students

RESEARCH AND INNOVATION

4,8 M€

research contracts
CNRS, Armines, and the school

199

publications
including

142 A-ranking

42

HDR (accreditation to supervise research)

5

R&D platforms
including 1 in Castres

11

chairs and jointly-run laboratories

RECRUITMENT

315

new students in all courses

GRADUATION

412

diplomas
awarded by the school including

65 double diplomas

TECHNOLOGY INCUBATOR

9

projects incubated in 2020

100%

3-year survival rate
of business created with the support of the school

SCIENTIFIC AND TECHNICAL CULTURE

840

external visitors
to school events

+70

reached cities

ALUMNI GRADUATED IN 2019

95%

net employment rate within 6 months

84%

find a job within 2 months

21%

employed abroad

37 805 €

annual gross salary
within 6 months with bonuses

38 062 € average salary - women

37 582 € average salary - men

RESOURCES

335

staff
including

151 women

81 research fellows

21 R&D engineers

30 M€

aggregate annual budget
including

10 M€ self-obtained resources

KEY FIGURES OF THE IMT

13 200

students
engineers and managers

70 M€

contractual resources
from research

+4 100

degrees awarded

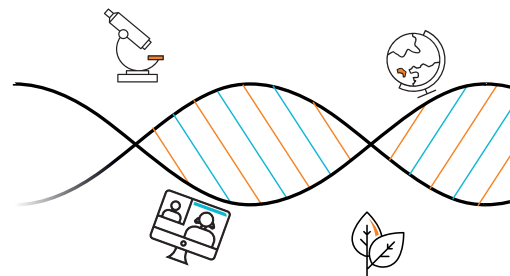
1 833

A-rank publications

7 364

partner firms
SMEs and TWAs with less than
5,000 employees





*Discover the 2020
Annual Report website*

Campus Jarlard
81013 ALBI CT Cedex 09
Tél. : +33 5 63 49 30 00
Fax : +33 5 63 49 30 99

www.imt-mines-albi.fr

